



VALLA 120 E MOBILE CRANE Max Capacity 12 t



PROPULSION: 12 kW - 72 V DC fanned reversible electric motor fitted with a MOSFET speed control and microprocessor. Foot operated brakes on driving wheels and hydraulic shoe brakes on front wheels. Hand brake mechanically operated.

TRANSMISSION: differential axle with reduction gear between motor and wheels running in oil bath. Travelling speed up to 10 Km/h.

CRANE FRAME: fabricated from preformed and welded steel plate with built-in counterweight.

BOOM: fabricated from preformed and welded steel plate with 3 hydraulic telescoping sections. Fitted with adjustable nylon wear pads.

HYDRAULIC SYSTEM: in own enclosed circuit powered by a 8 kW - 72 V motor driven pump through two self cancelling control valves, lever operated, 1 for boom raise and lower, 1 for boom extension and retraction. Fitted with safety valves and filters. Maximum hydraulic pressure 200 Bar.

BATTERY: 820 Ah - 72 V. Battery meter on dashboard.

SUSPENSION: oscillating rear axle with mechanical lock.

WHEELS: rear 2 solid tires 27 x 10 - 12", front 4 solid tires 7.00 - 12".

STEERING: power steering operated through own hydraulic circuit by a hydraulic cylinder fitted between the articulated power unit and the crane frame allowing 130° steering fitted with safety valves and filters. 1 kw - 72 V motor driven pump.

DRIVER'S OVERHEAD GUARD: a steel frame over driver's seat allowing full visibility with metal checker plate overhead.

TOTAL MACHINE WEIGHT: 13.000 Kg.

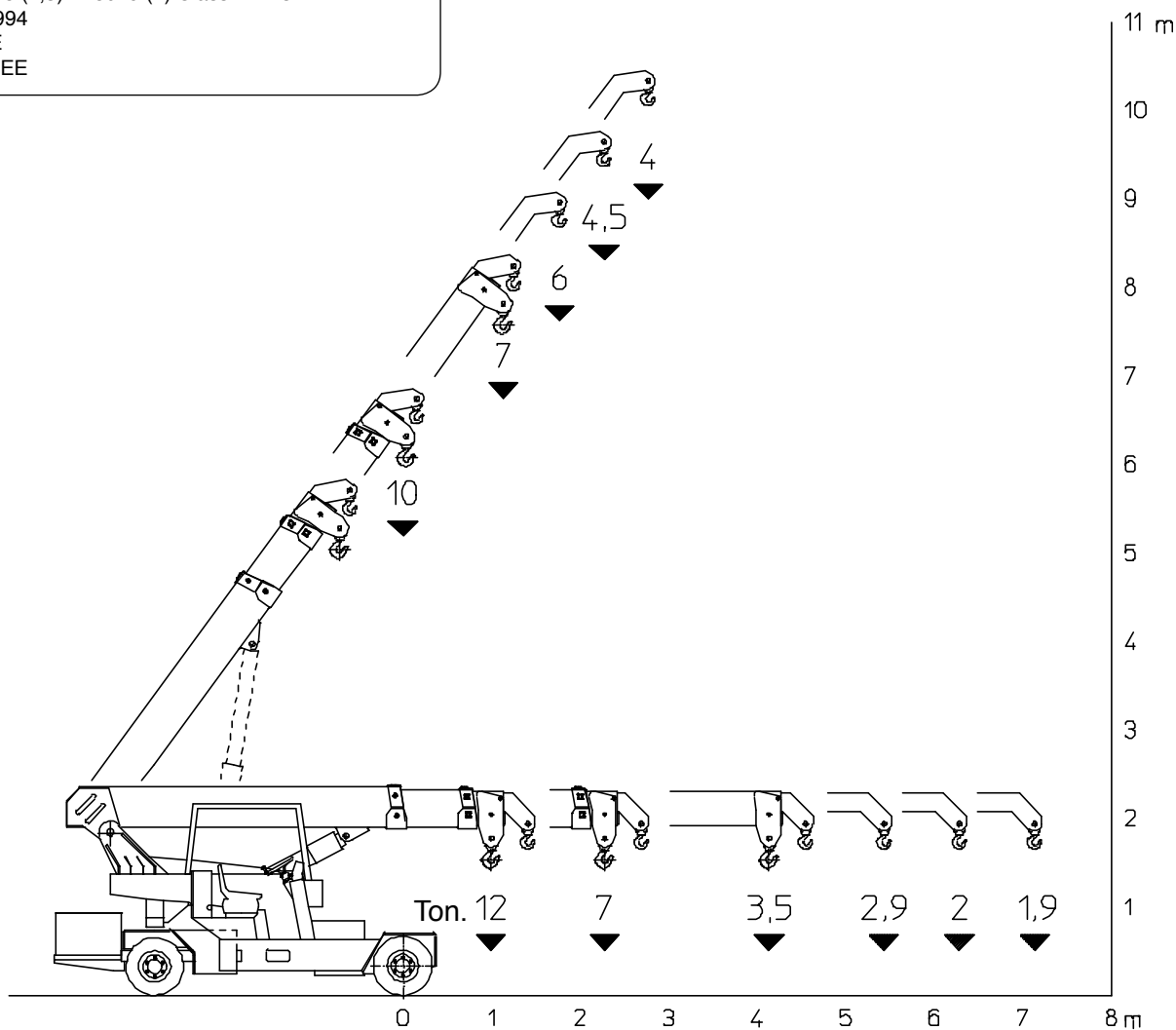
OPTIONAL EXTRAS: L.M.I. (Electronic Load Moment Indicator), manual boom extension, man bucket, remote control, canvas cab, hydraulic winch, hydraulic chain hoist, carry deck, battery, battery charger, non-marking tires.

Valla S.p.A.

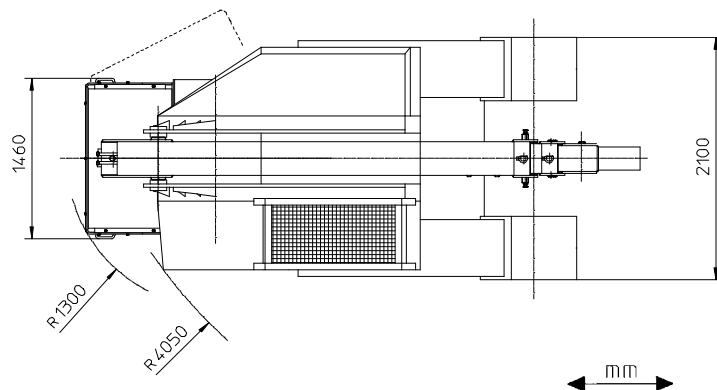
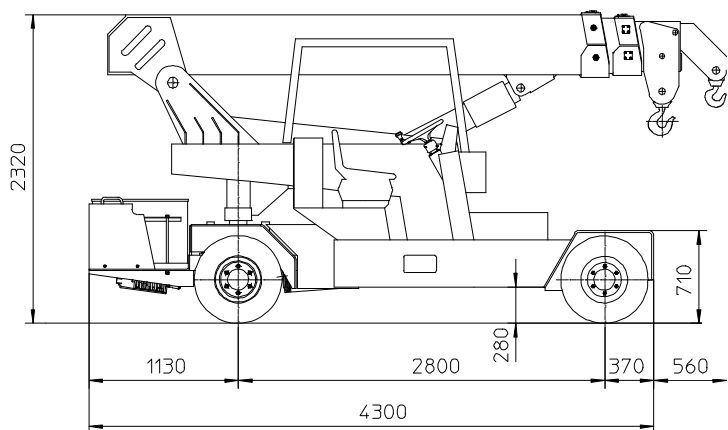
Via Piacenza, 45 - 29010 Calendasco - Piacenza - ITALIA
Tel. 0039 0523 762025 - 762004 - Fax 0039 0523 760531
Internet: www.valla.com - email: info@valla.com

The crane complies with following international standards:

- I.S.P.E.S.L.
- DIN 15018 (1,3) - 15019 (1) Class H2 B3
- ANSI - 1994
- 98/37/CE
- 89/336/CEE



VALLA MODEL 120 E



Valla S.p.A.

Via Piacenza, 45 - 29010 Calendasco - Piacenza - ITALIA
 Tel. 0039 0523 762025 - 762004 - Fax 0039 0523 760531
 Internet: www.valla.com - email: info@valla.com

